

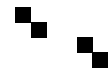
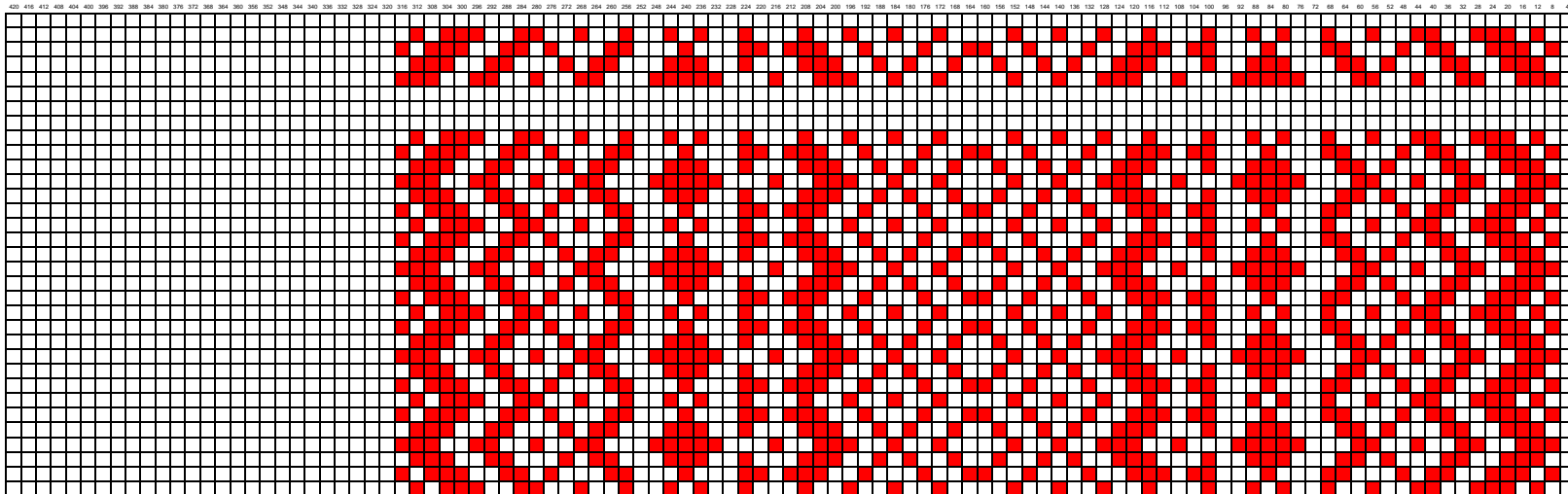
Skillbragd Runner #2 - Group project of Scandinavian Weavers Study Group August-October 2018

Pattern 2.4

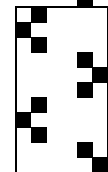
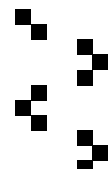
Warp - 16/2 Swedish linen, approx 32 cm. = 320 threads in 50/10 (12 dent) reed 10/cm= approx 25 epi

Weft - weaver's choice for pattern shots, 16/2 linen for ground shots

16 15 14 13 12 11 10 9 8 7 6 5 4 3 2 1

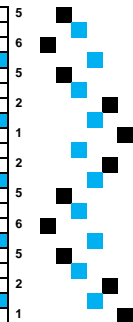
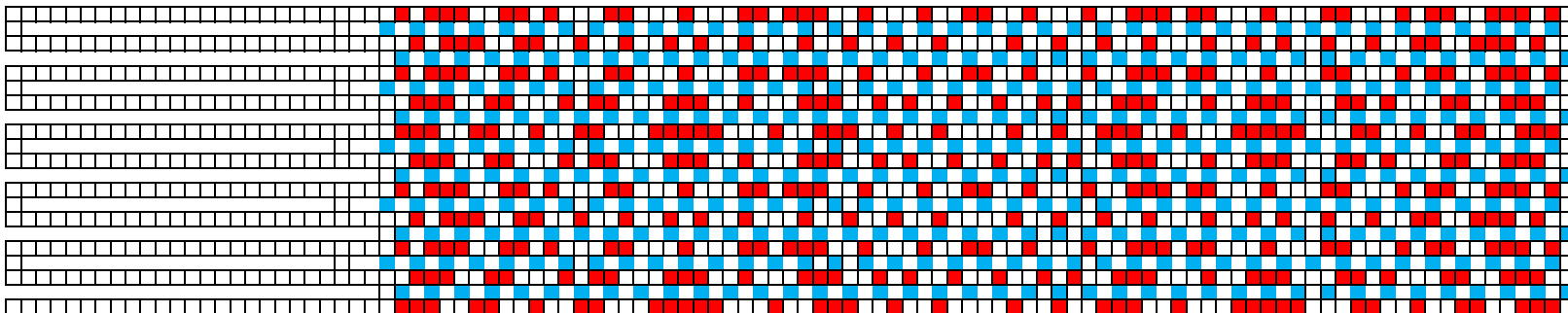


6 5 4 3 2 1



Box: See Below

Actual Treading Pattern with Ground



Start here ^