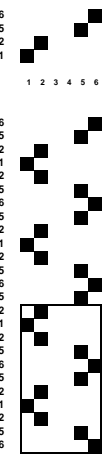
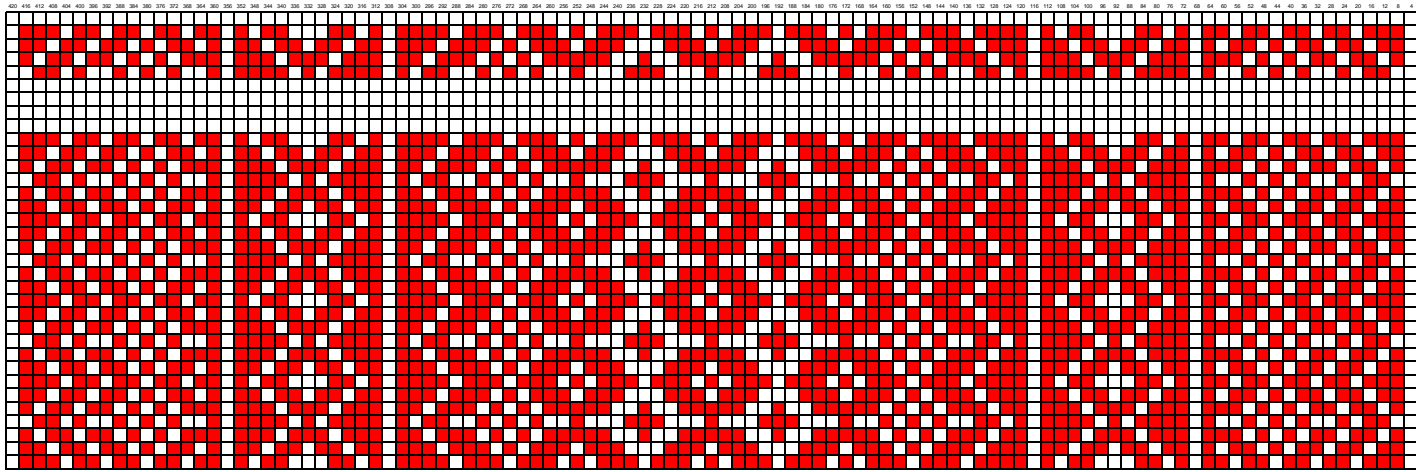


Skillbragd Runner #1 - Group project of Scandinavian Weavers Study Group May-July 2018

Warp - 16/2 Swedish linen, approx 45 cm. = 420 threads in 50/10 reed 10/cm= approx 22 epi

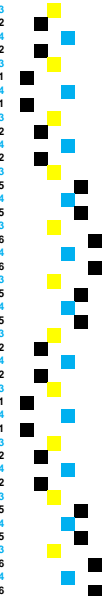
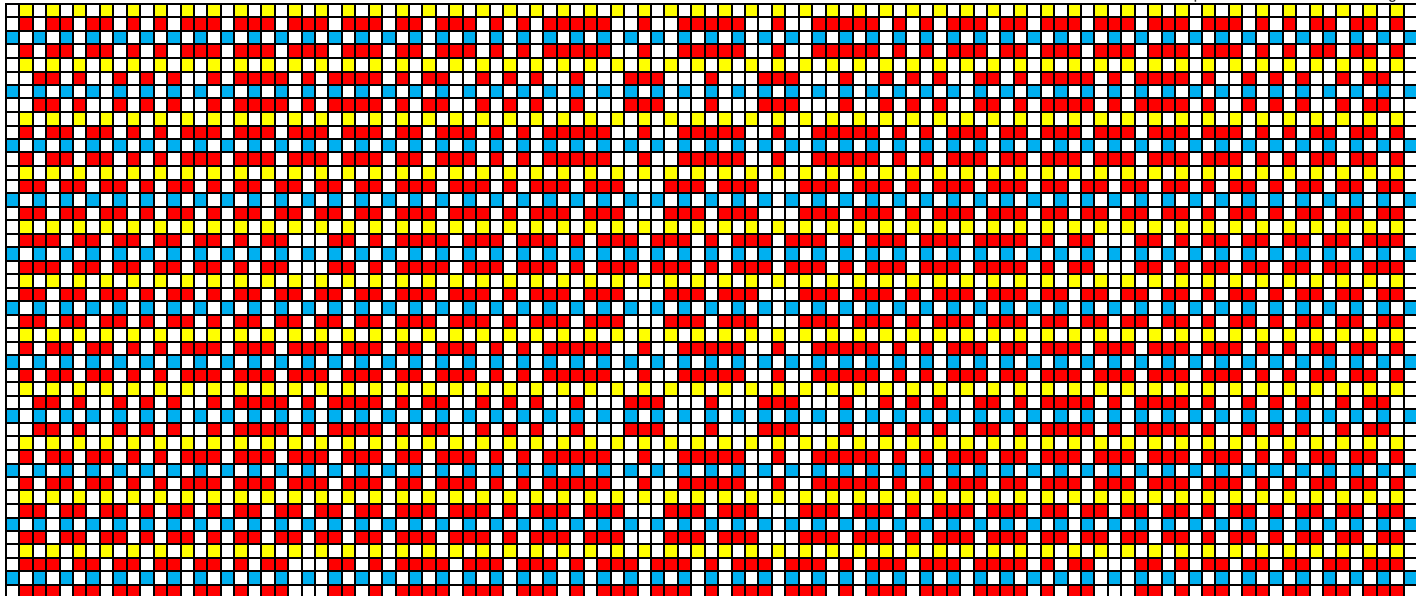
Weft - weaver's choice

16 15 14 13 12 11 10 9 8 7 6 5 4 3 2 1



Box: See Below

To achieve "square blocks": Actual Treading Pattern with Ground



Start here ^